

Vol en du0

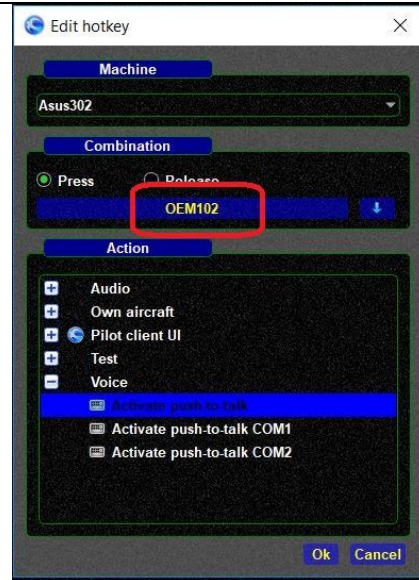


SWIFT

Configuration de la touche pour parler.

Menu Settings	A screenshot of the SWIFT interface showing a menu with options: Text/Chat, Flight pl., Log, and Settings. The 'Settings' option is highlighted with a red box.
Menu Hotkey	A screenshot of the SWIFT interface showing a menu with options: GUI, Hotkeys, and Data load and caches. The 'Hotkeys' option is highlighted with a red box.
add	A close-up screenshot of the 'Hotkeys' menu showing three buttons: 'edit', 'add', and 'remove'. The 'add' button is highlighted with a red box.
<p>1 : Selectionner Press</p> <p>2 : Menu Voice >> choisir Activate push_to_talk</p> <p>3 cliquer sur [Select]</p>	A screenshot of the 'Edit hotkey' dialog box. It shows the 'Machine' set to 'Asus302', the 'Combination' set to 'Press 1', and the 'Action' set to 'Activate push-to-talk'. Red arrows point from the text in the left column to the corresponding elements in the dialog box: '1' points to the 'Press' radio button, '2' points to the 'Activate push-to-talk' action, and '3' points to the '[Select]' button.

Appuyer sur la touche choisie pour parler
Son code doit s'afficher
Cliquer sur OK



Affichage de la touche et de son action



A la pression de la touche,
La led PTT doit s'allumer

